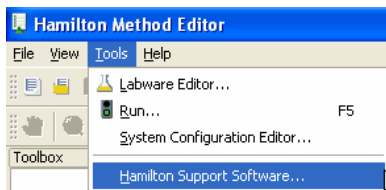
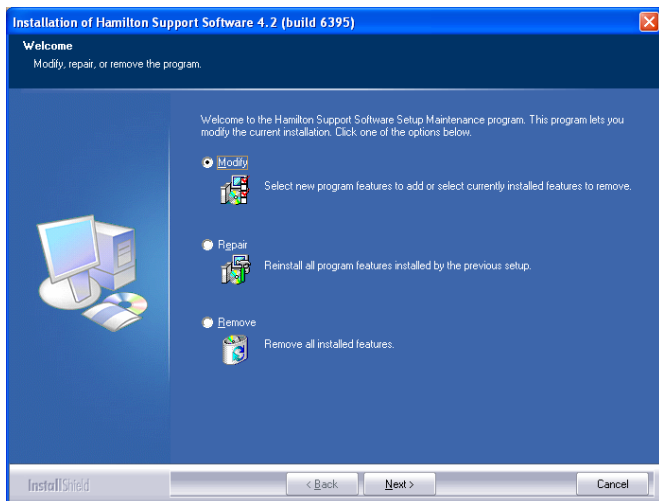


Activating Labware with Hamilton Support Software

1. Open up the *Hamilton Method Editor*
2. Start up the *Hamilton Support Software* from *Tools*



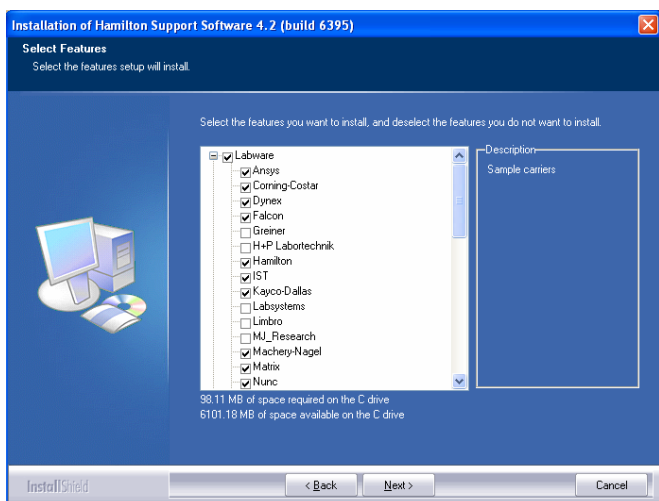
3. Select *Modify*, then *Next*



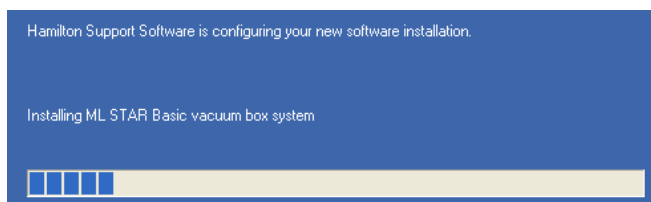
- 4a. Click the *Labware* checkbox twice to activate all labware files of this branch

OR

- 4b. Click the ,plus' [+]' sign to open the labware branch and select the desired files individually by setting the checkbox active.



The installation of the selected files starts after clicking *Next*. This may take several minutes depending on your selection.



To close the Hamilton Support Software, click *Finish*. The freshly activated labware files are now available.